



Product Service

CERTIFICATE

No. Z2 16 10 56640 172

Holder of Certificate:

Wangsheng Company, Ltd.
Wangsheng Company, Ltd.
Wangsheng Company, Ltd.
Wangsheng Company, Ltd.
Wangsheng Company, Ltd.

Production
Facility(ies):

56640



Certification Mark:



Product:

**Electric scales
(Body fat / hydration monitor scale)**

Model(s):

**EF118, EF138, EF148, EF148H
EF151BW, EF221BW, etc.
(See page 2-3 for models details)**

Parameters:

Rated voltage:	See page 2-3
Protection class:	III

Tested according to:

**EN 55014-1:2006/A2:2011
EN 55014-2:1997/A2:2008**

The product was tested on a voluntary basis and complies with the essential requirements. The certification mark shown above can be affixed on the product. It is not permitted to alter the certification mark in any way. In addition the certification holder must not transfer the certificate to third parties. See also notes overleaf.

Test report no.:

647100834724

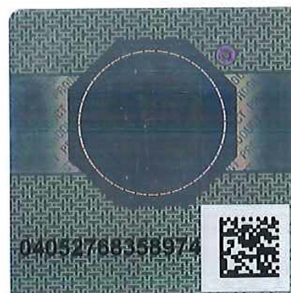
Valid until:

2017-01-15

Date, 2016-10-11

(Tony Liu)

Page 1 of 3





Product Service

CERTIFICATE

No. Z2 16 10 56640 172

Item No.	Model name	Rated voltage
1	EF118	9V,6F22
2	EF138	9V,6F22
3	EF148	9V,6F22
4	EF148H	9V,6F22
5	EF151BW	9V,6F22
6	EF221BW	6V,4*AA
7	EF222BW	6V,4*AA
8	EF231BW	6V,4*AA
9	EF232BW	6V,4*AA
10	EF311BW	6V,4*AA
11	EF411BW	9V,6F22
12	EF431	6V, 2*CR2032
13	EF511BW	9V,6F22
14	EF521BW	9V,6F22
15	EF522BW	9V,6F22
16	EF538	9V,6F22
17	EF551BW	9V,6F22
18	EF561H	1.5V,1*AA for clock 6V,4*AA for scale
19	EF571	6V,2*CR2032
20	EF571H	6V,4*AAA
21	EF711H	9V,6F22
22	HF10	6V,2*CR2032
23	EF912	6V,2*CR2032
24	EF432	6V,2*CR2032
25	EF910	6V,2*CR2032
26	EF913	6V,2*CR2032
27	EF941	3V, CR2032
28	EF541	3V,1*CR2032
29	EF922	6V,2*CR2032
30	EF931	3V,2*AAA for main body 3V,2*AAA for remote controller
31	EF932	3V,2*AAA for main body 3V,2*AAA for remote controller
32	EF933	3V,2*AAA for main body 3V,2*AAA for remote controller
33	EF934	3V,2*AAA for main body 3V,2*AAA for remote controller
34	EF906	3V,2*AAA
35	EF542	3V, CR2032
36	EF721	3V, CR2032
37	EF721H	3V,2*AAA
38	EF521BW	9V,1*6F22
39	EF551BW	9V,1*6F22
40	EF601	3V,2*AAA
41	EF601H	3V,2*AAA
42	EF923	3V, CR2032
43	EF581	3V,2*AAA
44	EF581H	3V,2*AAA
45	EF582	3V, CR2032
46	EF936	3V,2*AAA for main body 3V,2*AAA for controller

Page 2 of 3



Product Service

CERTIFICATE

No. Z2 16 10 56640 172

47	EF602	3V,2*AAA
48	EF602H	3V,2*AAA
49	EF901	3V, 1*CR2032
50	EF902	3V, 1*CR2032
51	EF903	3V, 1*CR2032
52	EF904	3V, 1*CR2032
53	EF905	3V, 1*CR2032
54	EF543	3V,2*AAA
55	EF543H	3V,2*AAA
56	EF921	3V,2*AAA
57	EF921H	3V,2*AAA
58	EF731	3V,2*AAA
59	EF731H	3V,2*AAA
60	EF741	3V,2*AAA
61	EF741H	3V,2*AAA
62	EF907A	3V, 1*CR2032
63	EF908	3V, 1*CR2032
64	EF544	3V, 1*CR2032
65	EF544H	3V,2*AAA
66	EF932	3V,2*AAA
67	EF320	3V,2*AAA
68	EF320H	3V,2*AAA
69	EF401	3V, 1*CR2032
70	EF751	3V,2*AAA
71	EF751H	3V,2*AAA
72	EF953	3V, 1*CR2032
73	EF907	3V, 1*CR2032
74	EF935	3V,1*CR2032 for main body 3V, 1*CR2032 for controller
75	EF995	3V, 1*CR2032
76	EF954	3V, 1*CR2032
77	EF971	3V, 1*CR2032
78	EF972	3V, 1*CR2032
79	EF973	3V, 1*CR2032
80	EF974	3V, 1*CR2032
81	EF961	3V, 1*CR2032
82	EF962	3V, 1*CR2032
83	EF981	3V, 1*CR2032
84	EF982	3V, 1*CR2032
85	EF983	3V, 1*CR2032
86	EF984	3V, 1*CR2032
87	EF981H	3V, 1*CR2032
88	EF982H	3V, 1*CR2032
89	EF983H	3V, 1*CR2032
90	EF984H	3V, 1*CR2032
91	EF957	3V, 1*CR2032
92	EF996	3V, 1*CR2032

Test report no.: 647100834724

Date, 2016-10-10

Page 3 of 3



Product Service

Attestation of Conformity

No. E8A 16 10 56640 173

Holder of Certificate: Zhongshan Camry Electronic Co.,LTD.

Baishawan Industrial Park
Qiwang Road East, East District
528400 Zhongshan, Guangdong
PEOPLE'S REPUBLIC OF CHINA

Name of Object: Electric scales
(Body fat / hydration monitor scale)

Model(s): EF118, EF138, EF148, EF148H
EF151BW, EF221BW, etc.
(See page 2-3 for models details)

Description of Object:

Rated voltage: See page 2-3
Protection class: III

Tested according to:

EN 55014-1:2006/A2:2011
EN 55014-2:1997/A2:2008

This Attestation of Conformity is issued on a voluntary basis according to the Directive 2014/30/EU relating to electromagnetic compatibility. It confirms that the listed apparatus complies with all essential requirements of the directive and is based on the technical specifications applicable at the time of issuance. It refers only to the particular sample submitted for testing and certification. See also notes overleaf.

Test report no.: 647100834724



Date, 2016-10-11

(Tony Liu)



After preparation of the necessary technical documentation as well as the EU declaration of conformity the required CE marking can be affixed on the product. That declaration of conformity is issued under the sole responsibility of the manufacturer. Other relevant EU-directives have to be observed.

Page 1 of 3



Product Service

Attestation of Conformity

No. E8A 16 03 56640 173

Item No.	Model name	Rated voltage
1	EF118	9V,6F22
2	EF138	9V,6F22
3	EF148	9V,6F22
4	EF148H	9V,6F22
5	EF151BW	9V,6F22
6	EF221BW	6V,4*AA
7	EF222BW	6V,4*AA
8	EF231BW	6V,4*AA
9	EF232BW	6V,4*AA
10	EF311BW	6V,4*AA
11	EF411BW	9V,6F22
12	EF431	6V, 2*CR2032
13	EF511BW	9V,6F22
14	EF521BW	9V,6F22
15	EF522BW	9V,6F22
16	EF538	9V,6F22
17	EF551BW	9V,6F22
18	EF561H	1.5V,1*AA for clock 6V,4*AA for scale
19	EF571	6V,2*CR2032
20	EF571H	6V,4*AAA
21	EF711H	9V,6F22
22	HF10	6V,2*CR2032
23	EF912	6V,2*CR2032
24	EF432	6V,2*CR2032
25	EF910	6V,2*CR2032
26	EF913	6V,2*CR2032
27	EF941	3V, CR2032
28	EF541	3V,1*CR2032
29	EF922	6V,2*CR2032
30	EF931	3V,2*AAA for main body 3V,2*AAA for remote controller
31	EF932	3V,2*AAA for main body 3V,2*AAA for remote controller
32	EF933	3V,2*AAA for main body 3V,2*AAA for remote controller
33	EF934	3V,2*AAA for main body 3V,2*AAA for remote controller
34	EF906	3V,2*AAA
35	EF542	3V, CR2032
36	EF721	3V, CR2032
37	EF721H	3V,2*AAA
38	EF521BW	9V,1*6F22
39	EF551BW	9V,1*6F22
40	EF601	3V,2*AAA
41	EF601H	3V,2*AAA
42	EF923	3V, CR2032
43	EF581	3V,2*AAA
44	EF581H	3V,2*AAA
45	EF582	3V, CR2032
46	EF936	3V,2*AAA for main body 3V,2*AAA for controller

Page 2 of 3



Product Service

Attestation of Conformity

No. E8A 16 03 56640 173

47	EF602	3V,2*AAA
48	EF602H	3V,2*AAA
49	EF901	3V, 1*CR2032
50	EF902	3V, 1*CR2032
51	EF903	3V, 1*CR2032
52	EF904	3V, 1*CR2032
53	EF905	3V, 1*CR2032
54	EF543	3V,2*AAA
55	EF543H	3V,2*AAA
56	EF921	3V,2*AAA
57	EF921H	3V,2*AAA
58	EF731	3V,2*AAA
59	EF731H	3V,2*AAA
60	EF741	3V,2*AAA
61	EF741H	3V,2*AAA
62	EF907A	3V, 1*CR2032
63	EF908	3V, 1*CR2032
64	EF544	3V, 1*CR2032
65	EF544H	3V,2*AAA
66	EF932	3V,2*AAA
67	EF320	3V,2*AAA
68	EF320H	3V,2*AAA
69	EF401	3V, 1*CR2032
70	EF751	3V,2*AAA
71	EF751H	3V,2*AAA
72	EF953	3V, 1*CR2032
73	EF907	3V, 1*CR2032
74	EF935	3V,1*CR2032 for main body
		3V, 1*CR2032 for controller
75	EF995	3V, 1*CR2032
76	EF954	3V, 1*CR2032
77	EF971	3V, 1*CR2032
78	EF972	3V, 1*CR2032
79	EF973	3V, 1*CR2032
80	EF974	3V, 1*CR2032
81	EF961	3V, 1*CR2032
82	EF962	3V, 1*CR2032
83	EF981	3V, 1*CR2032
84	EF982	3V, 1*CR2032
85	EF983	3V, 1*CR2032
86	EF984	3V, 1*CR2032
87	EF981H	3V, 1*CR2032
88	EF982H	3V, 1*CR2032
89	EF983H	3V, 1*CR2032
90	EF984H	3V, 1*CR2032
91	EF957	3V, 1*CR2032
92	EF996	3V, 1*CR2032

Test report no.: 647100834724

Date, 2016-10-10

Page 3 of 3